

Taylor's Run



Taylor's Run

1012 Taylor's Road, Fraser Rise

We all need a place to belong — to build a home and a future for our family. As soon as you pass through the gates of Taylors Run, you know you've found that place. You'll discover that it's filled with parks, creeks and ponds, creating a beautiful natural sanctuary.

The neighbourhood is full of families like yours. You'll know that this is where you and your family can thrive, close to everything and everyone you need. It's a feeling. It's the excitement of finding a place that delivers on its promise.

It's the place where you belong.



**It's the access to
10 hectares of
stunning wetlands**

It's the parks and the playgrounds







Design Detail



Taylors Run is designed for families to flourish. Kids ride their bikes in the wide streets, beautifully landscaped and lined with trees that burst with colour. Say 'hello' as you wander to the wetlands that lie a short walk from every home. Plant seedlings in your front garden, encourage your kids to set up snail races or perhaps just watch toddlers totter across the lawn.

A range of lot sizes and aspects provides real choice for new homes in a fast-growing region. And pockets of townhouses overlook parklands, so that everyone can enjoy time outdoors. A local bus runs through the estate, making life easy, but carpooling makes sense too when schools, shops and cafés are all close to home.



Masterplan



Western Freeway
3.7 Km



Local Park

Waterway

Wetlands

Saric Street

Taylor's Road

City Vista Retail Hub
1 Km



Springside West
Secondary College
1.2 Km



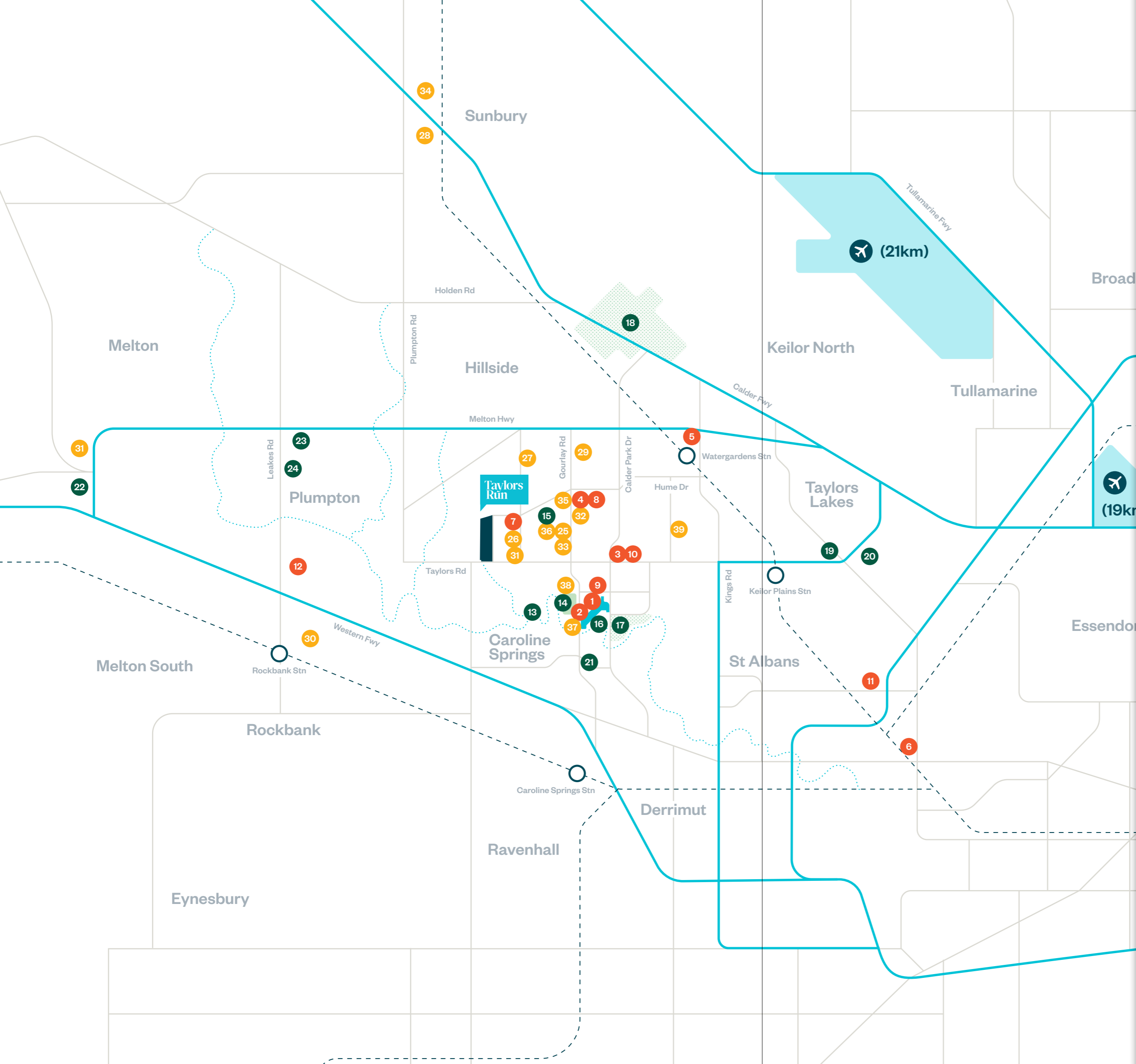
Caroline Springs
3.5 Km



Melbourne CBD
25 Km



Welcome to the neighbourhood, where all you need to play, learn and relax is close to home



● Amenity

- 01 C.S Square
- 02 Central Shopping Centre
- 03 Watervale Shopping Centre
- 04 Taylors Hill Village
- 05 Watergardens Town Centre
- 06 Burnside Hub Shopping Centre
- 07 City Vista Shopping Centre
- 08 Taylors Hill Medical Clinic
- 09 Active Medical Centre
- 10 Watervale Medical
- 11 Sunshine Hospital
- 12 Woodlea Town Centre

● See & Do

- 13 Kororoit Creek
- 14 Caroline Springs Rec. Reserve
- 15 Springside Rec. Reserve
- 16 Lake Caroline Reserve
- 17 Burnside Heights Rec. Reserve
- 18 Organ Pipes National Park
- 19 Green Gully Reserve
- 20 Brimbank Park
- 21 Brookside Rec. Reserve
- 22 Melton Valley Golf Course
- 23 Galli Winery & Restaurant
- 24 Witchmount Estate Winery

● Education

- 25 Southern Cross Grammar
- 26 Springside West Secondary
- 27 Hillside Primary School
- 28 Diggers Rest Primary School
- 29 Parkwood Green Primary School
- 30 Aintree Primary School
- 31 Kurunjang Secondary College
- 32 Goodstart Early Learning
- 33 Unibella Family Day Care
- 34 Sunbury Downs Secondary College
- 35 Springside Primary
- 36 St George Preca Primary
- 37 Creekside College
- 38 Catholic Regional College
- 39 Copperfield College

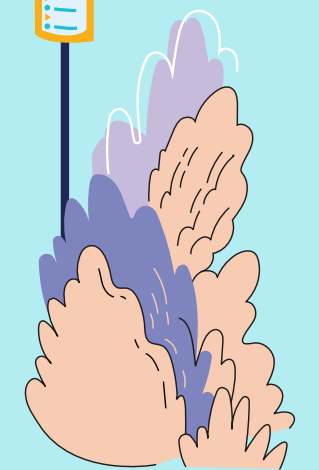
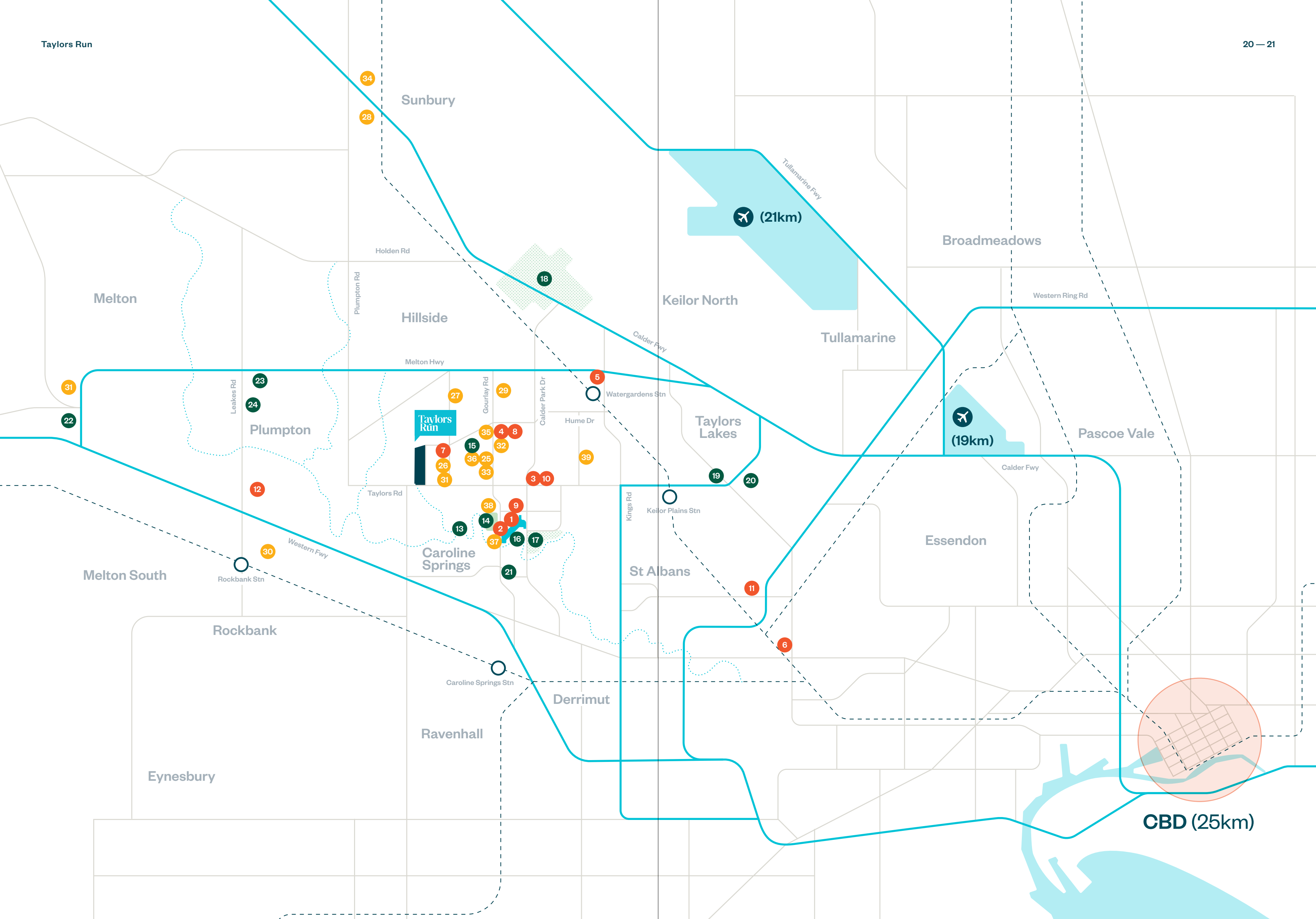
✈ Airport

○ Train Station

Taylor's Run

20 — 21

Arrive in Melbourne
CBD in just
30 minutes (25km)



It's the sounds of nature in the morning

Almost 10 hectares of beautiful wetlands, brimming with native birdlife, stretch across Taylors Run. These are wonderful places for children to stomp, splash and clamber over creeks and pathways. To spot birds, beetles and butterflies. To watch the seasons change, and to play with friends.

GBLA Landscape Architects has designed a place for wandering off the beaten trail, including exercise nodes and a viewing platform over the wetland pool. Follow the path along the creek, across the boardwalks and through the brush and feel a soul-nourishing connection with nature.





It's the excitement of new friends and ideas

There's something special about a new school. It's the fresh paint and fresh thinking. The state-of-the-art facilities designed for the latest education practices.

In Victoria's booming north-west, new schools are at the heart of each community. Lifelong friendships are made on the monkey bars, at the school gate and cheering at school sports days. Everyone grows up together.

There are 10 zoned schools within easy reach of Taylors Run. It's just a few minutes bike ride to Hillside Primary and Springside Primary Schools, and Springside West Secondary College is 1km away. There is additional private education available and for those not quite ready for big school, several day care centres.

It's the joy of stretching out and running free

The four-legged types, the ten-speed types — the Lycra, golfer and footy types — will feel at home at Taylors Run. You'll find gym sessions, tennis lessons, hockey grounds and baseball mounds all close by. Kids can bounce at trampoline parks and on the courts. There's the Lakers or the Bears for family-friendly football, and the new City Vista Pavilion, home to the George Cross soccer club, is a five-minute ride from home. Within Taylors Run, a landscaped park is home to a barbeque, sheltered picnic area playground with wooden, nature-inspired equipment. A collection of swings, hammocks, a carousel and quiet seating areas provides space for all sizes and speeds at Taylors Run.



It's the ease of having everything close by

A quick weekly shop or a slow browse-y shop can be enjoyed five minutes from Taylors Run. CS Square recently underwent a \$45m upgrade and is home to 75 retailers, big and small. Grab a snack from one of the cafés and eateries lining Caroline Springs Boulevard and head down to the lake. A 2km loop will burn excess energy before the short drive home.

There are plans for the Kororoit Creek trail to link up to Caroline Springs, with an off-road cycling path to Sunshine and into the CBD. For a faster trip, it's just 30 minutes by train to Southern Cross.





**It's always better
by the water**

CS Square Shopping Centre (5 minutes)



The Springs, CS Square Shopping Centre (5 minutes)



At Caroline Springs life is a breeze. Southern Cross Grammar is only four minutes away. Then it's time to catch up with a friend over a latte or pick up some fresh ingredients for a healthy snack.

Book types can head to the library and learning hub and sporty types can head to the track at the Brookside Recreation Reserve. It's all here.

Southern Cross Grammar (4 minutes)





Mr Nomane (4 minutes)

Brookside Recreation Reserve (6 minutes)



CS Library & Learning Hub (4 minutes)



Springside West Secondary College (2 minutes)



Boardwalk, Caroline Springs Lake (5 minutes)



Kororoit Creek (6 minutes)





It's the feeling
of stepping into
a new home



The Taylors Run masterplan was developed in consultation with some of Melbourne's, and Australia's, leading home builders. Consideration has been given to a range of living arrangements, with lot sizes and shapes devised to accommodate contemporary residential designs.

Stanhope 41





Yarra 33



Sandford 47

Savoy 40



Sandford 47





Australian property developer Blueways creates communities in which everyone can thrive. Its team believes that beautiful, considered and sophisticated design and the lifestyle it enables should be available to all.

The Melbourne based group's current schedule of projects will see the construction of 4,500 dwellings, housing over 12,000 people, by 2025.

The group supports a number of local and Victorian organisations, including local sporting and community clubs, the arts and non-for-profit charities.

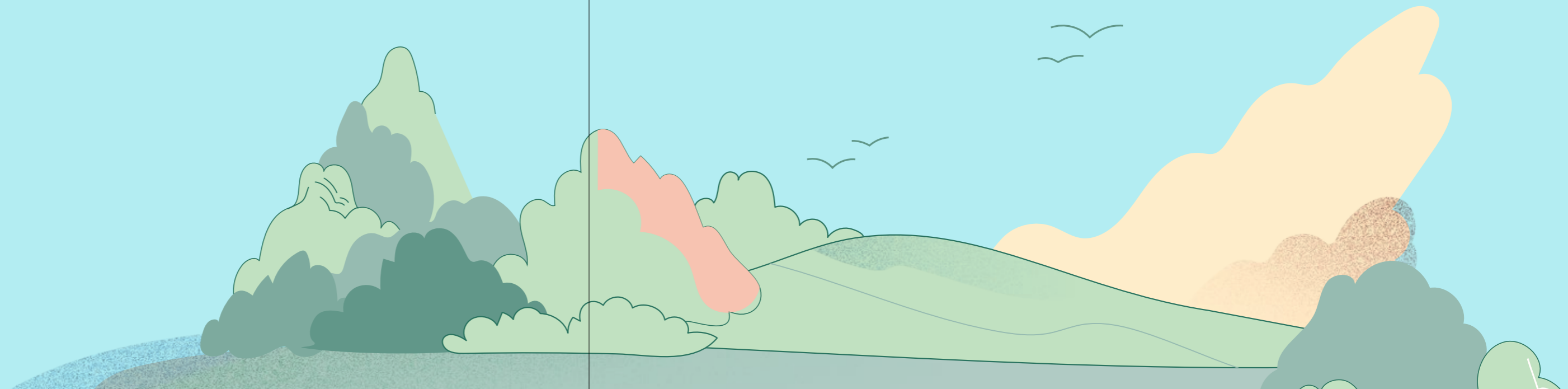
blueways.com.au



Wolfdene creates homes and places where people can be excited to live the lifestyle that they aspire to. We are a new-generation property developer, having learned from the past to create neighbourhoods for how we want to live today, and into the future.

Our communities are carefully considered in their design, architecture and site-specific urban planning, aiming to engage residents and foster meaningful interaction. We strive to ensure that your Wolfdene neighbourhood is the one that you look forward to coming home to.

wolfdene.com.au



Sales Centre Open
7 Days 10am — 5pm
03 9039 2064

1012 Taylors Road
Fraser Rise

taylorsrunliving.com.au

DISCLAIMER

While best endeavours have been used to provide information in this publication that is true and accurate, Blueways and Wolfdene accept no responsibility and disclaim all liability in respect to errors or inaccuracies it may contain. Prospective purchasers should make their own inquiries to verify the information contained herein. All plans, copy, illustrations and images are depictions for presentation purposes only.

Design: chrismoginn.com.au



