

# PHOENIX

AT ALARAH

Cranbourne West

Phoenix is a new neighbourhood located in Alarah, an established Wolfdene community in Cranbourne West. A precinct of architecturally-designed townhouses created for smart living, it considers each moment, from when your alarm goes off to that last cup of tea before bed—and everything life involves in between.

All the essentials are located close by, and with a town centre only a short walk to Hall Road, more amenities and lifestyle conveniences are popping up all the time. Your everyday errands like quick grocery shops, café dates and school runs happen with ease. Restaurants, bars and places to play are conveniently close by throughout Cranbourne and surrounds, with a bus line to connect you with what you need and where you need to be.

Lifestyles are made outdoors, so we've designed bike and walking paths to weave through the neighbourhood, connecting Phoenix to local schools and shopping. Closer to home, meet your neighbours in the nearby wetlands and play areas, or spend evenings stretched out with a book or at a barbecue with friends and family in the central park.



Aspire Early Education

Cranbourne West Shopping Centre

Willora Kindergarten

Cranbourne West Primary School

# PHOENIX

St. Peters College

Cranbourne Park Primary School

Cranbourne Park Shopping Centre

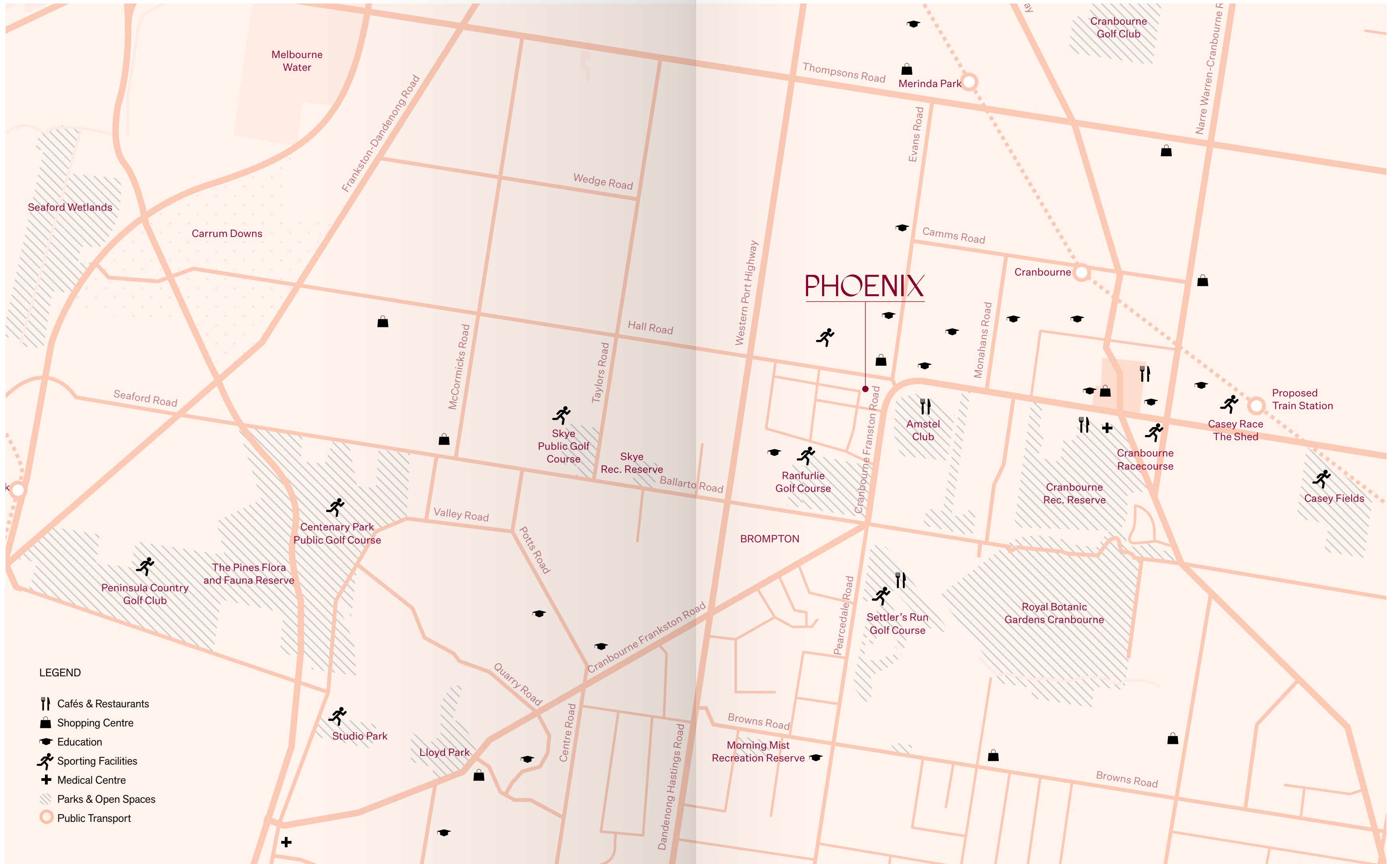
Amstel Club

Cranbourne Recreation Reserve

Cranbourne Racecourse







- LEGEND**
- Cafés & Restaurants
  - Shopping Centre
  - Education
  - Sporting Facilities
  - Medical Centre
  - Parks & Open Spaces
  - Public Transport



A neighbourhood is made by its people. We designed Phoenix with plenty of green spaces and community areas where you can get to know your neighbours and make important, everyday connections. A local central park, wetlands and waterways encourage exploration, while the playground equipment and bike paths make getting active a fun part of every day.

Our architecturally-designed townhomes use space cleverly to create homes that are not only liveable and loved, but smart and sustainable, too.

This exclusive collection of 32 three and four bedroom townhomes was made with you in mind, whether this is your first home, the next step in your family's life, a decision to downsize, or a smart investment choice.





Artist's Impression





Artist's Impression





Artist's Impression





Artist's Impression





Artist's Impression





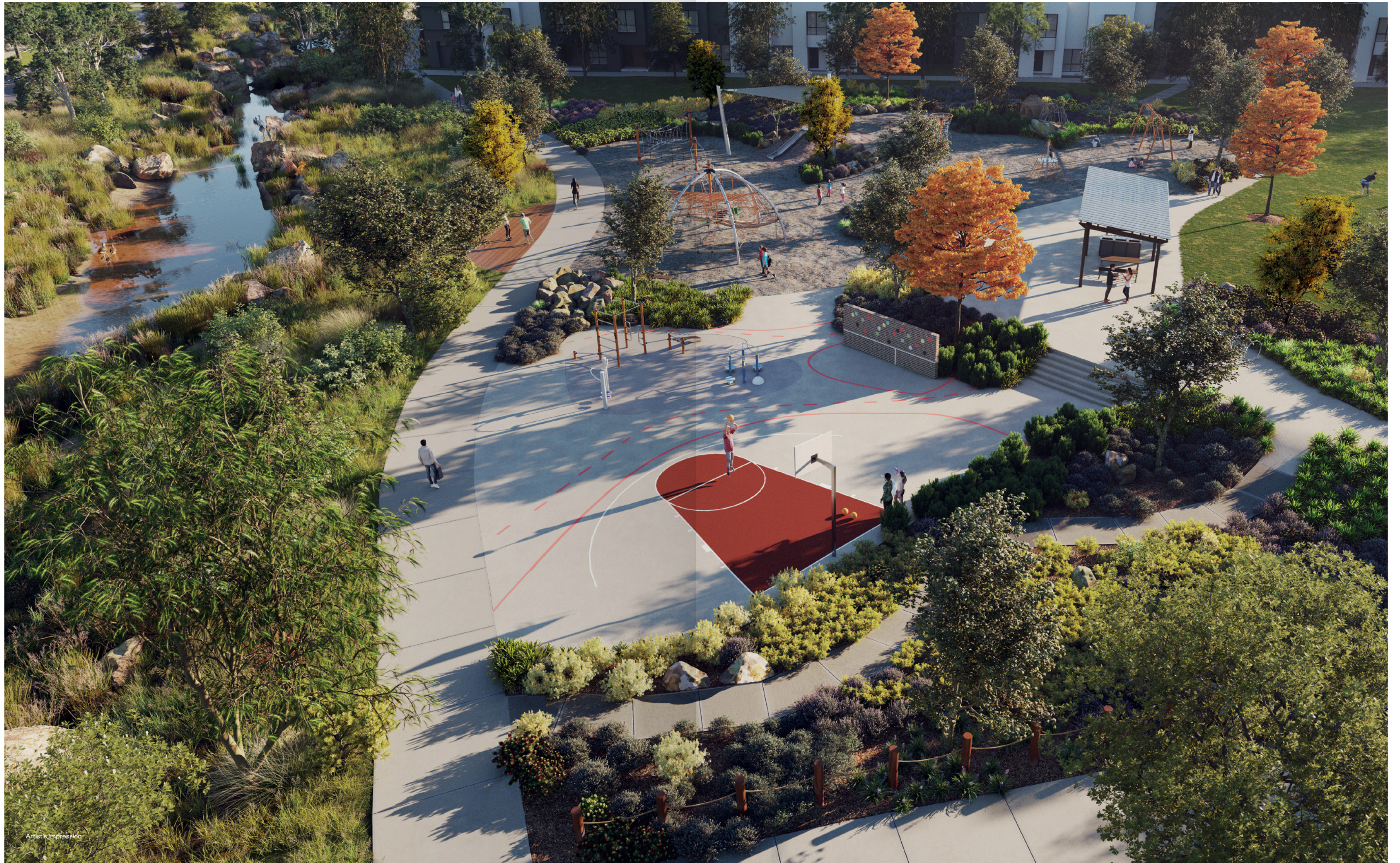
Artist's Impression





Artist's Impression





Artist's Impression



## THE TEAM

### Wolfdene

Wolfdene shares the excitement of creating a new home. We aim to create places where people live the lifestyle they aspire to.

Our communities are carefully considered in their design, architecture and site-specific urban planning to engage residents and foster interaction. Our constant challenge is to ensure a Wolfdene neighbourhood is a neighbourhood you look forward to coming home to.

[wolfdene.com.au](http://wolfdene.com.au)



### DKO Architecture

DKO sits at the forefront of residential design, with additional experience spanning hotels and workplace. DKO's design ethos is centred around people, and the use of architecture to control and adapt to changing times.

With strong beliefs that the best idea requires the ability to collaborate and communicate, DKO has established themselves as a highly sought after team of more than 200 professionals working across Australia, New Zealand and South East Asia.

[dco.com.au](http://dco.com.au)

**DKO**

## CONTACT

### Display suite

Located on the corner of Alarah & Hayton  
Park Boulevard in Cranbourne West  
Phone 03 9246 0446

[liveatphoenix.com.au](http://liveatphoenix.com.au)



